

## MAXVU



The new MAXVU is a cost effective temperature controller which is fast to configure, has improved display visibility and reduces costs by minimising wiring and panel space.

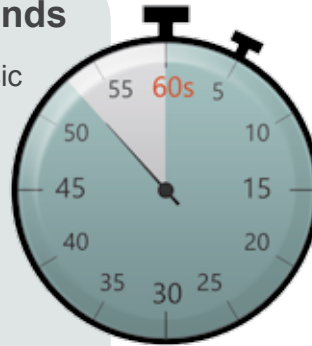
## At-a-Glance

### Save Valuable Time - Set-Up in Under 60 Seconds

MAXVU has been specially designed for ease of use with a basic setup menu accessed from the front keypad.

- Includes 10 most common parameter settings
- Set-up in less than 60 sec for many applications
- Advanced set-up menu can also be accessed when needed

Alternatively fast configuration of multiple instruments can be achieved with the easy-to-use MAXVU PC Software.



### Improve Process Monitoring with a High Visibility Display

The high visibility display provides increased clarity and enables vital process information and alarm messages to be viewed at a glance, even from a distance.

MAXVU's impressive large digits create the largest active display area for any 1/16DIN (48x48mm) controller and is equally impressive on the larger 1/8DIN version (96 x48mm).

MAXVU16



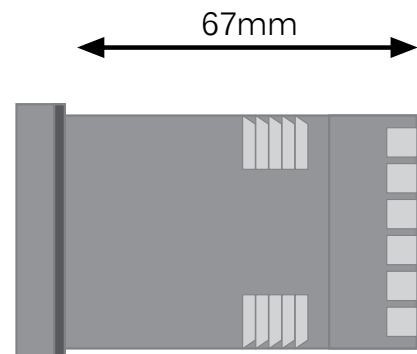
MAXVU8



### Reduce Space Required Behind-the-Panel

The short 67mm depth benefits installers by giving better access and reducing the panel depth required.

This results in MAXVU being easier to wire and quicker to install to save in overall costs.



# Key Features

## CONTROL

**MAXVU:**  
 PID or ON-OFF control  
 'Heat' only or 'heat & cool' strategy  
 Selectable indicator mode  
 2 alarms (absolute, deviation, band, loop)  
 Latching or non-latching alarm outputs  
 1 or 2 point calibration  
 Ramp/dwell with delay time  
 Reset to defaults

**MAXVU E:**  
 Extrusion default settings  
 Non-linear cooling  
 Soft start

## INDICATORS

**MAXVU:** Output status  
**MAXVU E:** Heat, cool, alarm

## DISPLAY

1/16 DIN: 18mm upper, 10.2mm lower  
 1/8 DIN: 18mm upper, 18mm lower

## INPUTS

Thermocouple: B, C, J, K, L, N, R, S, T,  
 RTD: PT100 2 or 3 wire,  
 Linear ranges: 0/4 to 20mA, 0/1 to 5V, 0/2 to 10V (Not MAXVU E)

## OUTPUTS

2 or 3 outputs; relay or SSR

## COMMS

RS485 Modbus RTU  
 Integral configuration port

## PROGRAMMING

Front keys or software programming

## FACIA & KEYPAD

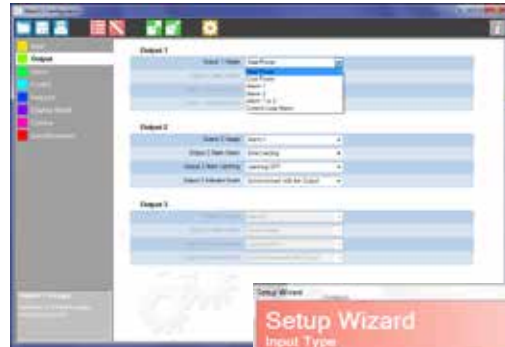
3 tactile keys



# MAXVU Configuration Software

Controllers can be programmed quickly using the dedicated PC configuration tool via MAXVU's integral configuration port.

- Logical menu driven interface
- Tables with drop down menus
- Graphical setup wizard with informative help panel
- Save configuration files
- Print report of controller settings



## Ordering Code

<b>Version</b>	<b>Supply Voltage</b>	<b>Communications</b>
0 Standard	M 110 to 240V AC	0 Not Fitted
E Extrusion	L 24V AC / DC	C RS485 Communications

<b>Format</b>	<b>Output</b>	<b>Terminal Cover</b>
16 1/16 DIN, 48 x 48mm	AA0 SSR Out 1 Out 2 Out 3	blank Not Fitted
08 1/8 DIN, 96 x 48mm	AR0 SSR Relay None	S415 Fitted
	RR0 Relay Relay None	
	ARR SSR SSR Relay	
	ARR SSR Relay Relay	
	RRR Relay Relay Relay	

**Ordering Code:** MV 16 0 M AA0 0 2 1 U 0



# Flexible for Use in a Range of Applications

MAXVU provides an affordable solution for applications needing essential temperature control.

## Packaging



## Heated Enclosures



## Food and Beverage



## Plastic & Rubber Extrusion



## General Heat Processes



## Contact Us



**Email:** [enquiries@west-cs.com](mailto:enquiries@west-cs.com)  
**Website:** [www.west-cs.co.uk](http://www.west-cs.co.uk)



**Telephone:** +44 (0)1273 606271  
**Fax:** +44 (0)1273 609990



**Address:** The Hyde Business Park  
Brighton, East Sussex  
BN2 4JU  
United Kingdom

BR-MV-2-UK-1607