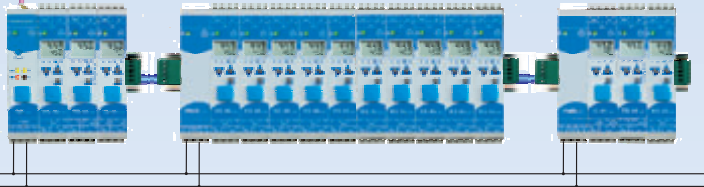
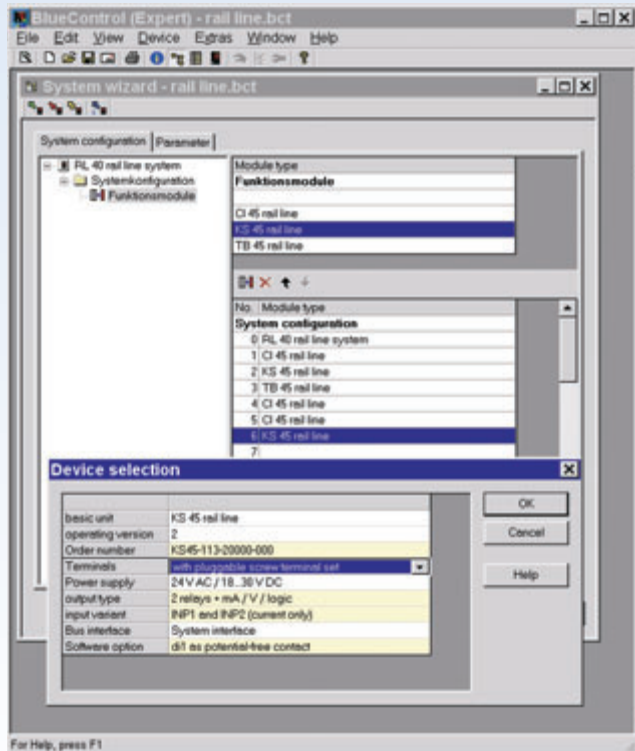


Flexible

- Centralized supply voltage
- Expansion via power supply modules

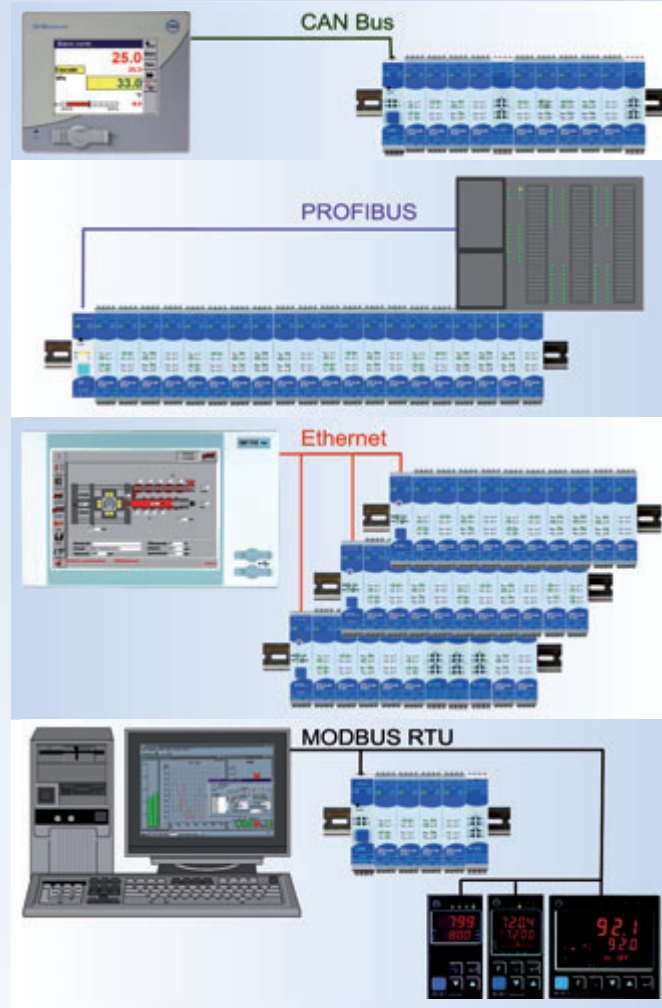


- System Wizard in BlueControl®
- Centralized Engineering



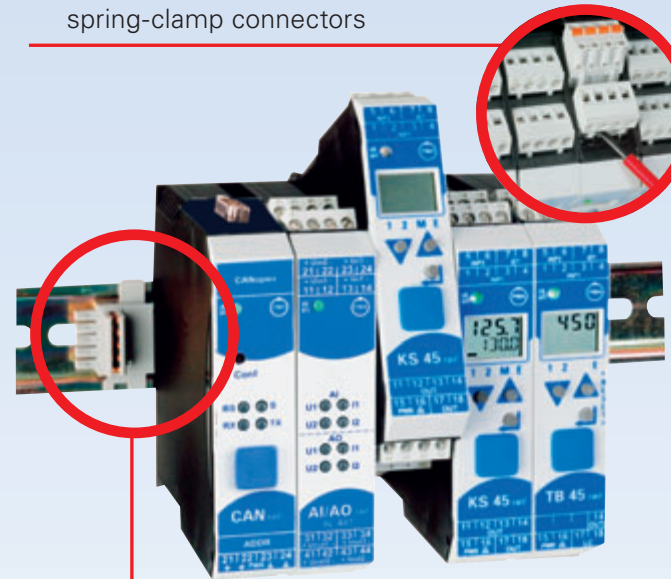
System solutions

with standard field buses



Practical

- Plug-in screw terminals or spring-clamp connectors



- Direct inter-module links
- Simple, close-packed mounting
- Hot swappable

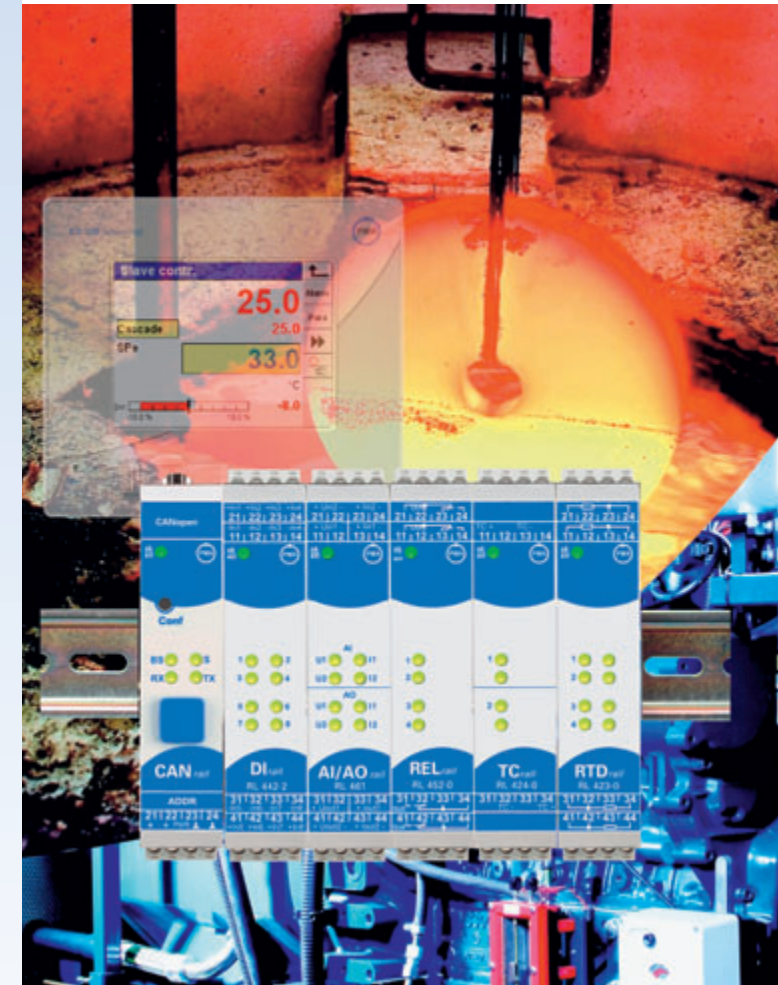
Do you have any questions regarding your specific needs?

Please contact us directly – we will be happy to help you.

PMA Prozeß- und Maschinen-Automation GmbH
 Miramstraße 87
 34123 Kassel/Germany
 Tel./Fax: +49 (0) 561 505-1307 / -1710
 E-mail: mailbox@pma-online.de
 www.pma-online.de

RL 400 *rail line*[™] I/O-System

Intelligent fieldbus modules



High-grade
signal processing

G070081 5/2007

Wir kriegen's geregelt
Close the loop with PMA



Comprehensive Intelligent fieldbus modules rail line



- Field bus coupler
- Digital and analog inputs/outputs
- Transmitter UNIFLEX CI 45
- Universal controller KS 45
- Temperature limiter TB 45

At a glance

- **Field bus coupler**
 - CANopen: RL40-CANopen
 - PROFIBUS DP: RL40-DP
 - Ethernet ModBus/TCP: RL40-ETH
 - ModBus RTU: RL40-MOD *)
- **Bus extension from 16 up to 62 modules**
 - PWR Power supply module: RL40-PWR



Analog and digital inputs and outputs

- **Analoge inputs**
 - AI Universal module: RL 422-0 AI Analog inputs, 4 x I / U / TPS / potentiom. (16 bits)
 - AI Module Pt 100: RL 423-0 RTD 4 x Pt 100 galvanically isolated
 - AI Module Pt 1000: RL 423-1 RTD 4 x Pt 1000 galvanically isolated
 - AI Module Pt 100/Pt 1000: RL 423-2 RTD 4 x Pt 100/Pt 1000 galvanically isolated
 - AI Thermocouple module: RL 424-0 TC 2 x TC galvanically isolated
 - AI Thermo./Lambda module: RL 424-1 TC 2 x TC / O₂ (mV)
 - AI Thermocouple module: RL 424-2 TC 4 x TC galvanically isolated 2/2 *)
- **Analog outputs**
 - AO Analog outputs: RL 431-0 AO 4 x I / U (±10 V / ±20 mA, 12 bits) *)
- **Analog inputs/outputs**
 - AIO Combi-module: RL 461-0 AI/AO Combination module
2 x AI (±U / ±I, 16 bits) Difference inputs
2 x AO (±U / ±I, 12 bits)
- **Digital inputs**
 - DI Digital inputs: RL 442-0 DI Digital inputs 2 x 4 x 24 VDC (pnp)
 - DI Digital inputs: RL 442-1 DI Digital inputs 2 x 4 x -24 VDC (nnp)
 - DI Digital inputs: RL 442-2 DI Digital inputs 2 x 4 x contact (potential-free)
 - DI Digital inputs: RL 443-0 DI 4 x contact, potential-free (115/230 VAC)
- **Digital outputs**
 - DO Digital outputs: RL 451-0 DO Digital outputs 2 x 4 x 24 VDC/2A
 - DO Digital outputs: RL 451-1 DO Digital outputs 2 x 4 x 24 VDC/2A (freewheel diode)
 - DO Digital outputs: RL 452-0 REL Relay outputs 4 x 230 VDC/5A

*) in preparation

RL 400 in a nutshell

- Supported field buses:
 - o CANopen
 - o Ethernet with ModBus/TCP protocol
 - o PROFIBUS DP with DPV1 protocol
 - o ModBus RTU
- Simple field bus integration for:
 - o Analog I/O modules
 - o Digital I/O modules
 - o Universal transmitter UNIFLEX CI 45
 - o Universal controller KS 45
 - o Temperature limiter TB 45
- Signal processing in output modules, e.g. automatic pulse response
- Signal processing through individual linearization
- Compact design, only 22,5 mm wide
- Top-hat rail mounting (EN 50 022)
- Plug-in screw terminals or spring-clamp connectors
- Function modules replaceable during operation (hot swap)
- Direct inter-module connections in top-hat rail
- Centralized 24 VDC energization
- Coupler handles up to 16 function modules
- Expandable up to 62 modules by means of additional supply units
- **BluePort**[®]-interface for the Engineering Tool
- **BlueControl**[®]-software with system Wizard and centralized access to all function modules

rail line